



ver. 23022023

PRODUCT SHEET

# ARAGO HOME

Ionic drinking water treatment device for the elimination of limescale deposits

The ARAGO home is an ionic drinking water treatment device that eliminates calcium deposits in water pipes, heating elements, boilers, taps, washing machines, dishwashers and other household appliances while preventing corrosion. Its action extends the life of the installed equipment. The release of zinc ions permanently alters the structure of the carbonate minerals in the water, preventing their deposition. The altered minerals are gradually flushed out of the water system.

The release of zinc ions permanently alters the structure of the carbonate minerals in the water, preventing their deposition. The altered minerals are gradually flushed out of the water system.

Thanks to this method of treatment, the water retains not only important minerals but also its original sensory properties.

ARAGO is a modern, eco-friendly and maintenance-free water treatment solution - it does not require a power source or chemicals to operate, reducing operating and service costs.

Provides reliable protection against limescale for 6-8 years (depending on water quality, composition and flow rate).

ARAGO is made of hygienically safe materials of the highest quality and is intended for contact with drinking water.

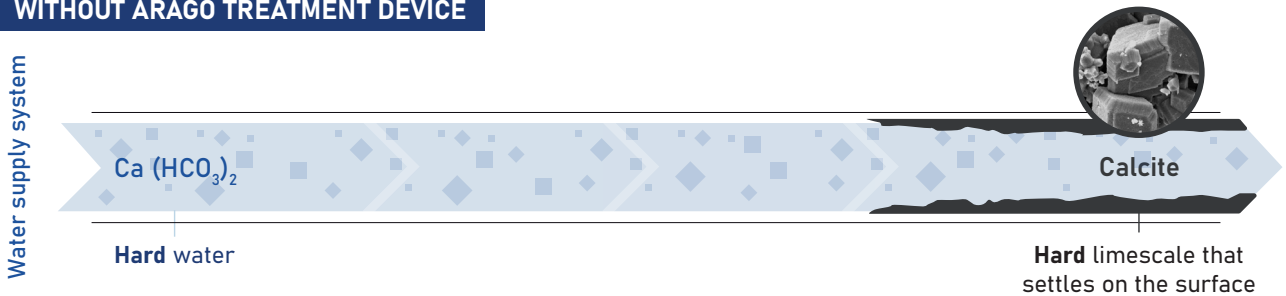
The product meets the requirements of Decree 409/2005 Coll. on hygiene requirements for products in contact with drinking water.

[www.arago-wt.com](http://www.arago-wt.com)

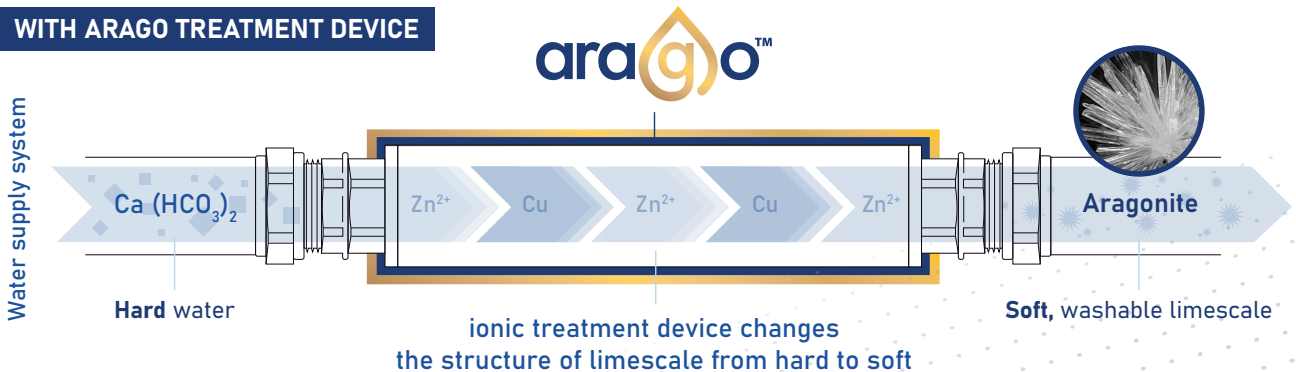
# The principle of operation of the ARAGO series treatment devices

- The hardness of water is mainly due to the dissolved calcium bicarbonate ( $\text{CaHCO}_3$ ) content. By changing the temperature (heating), the bicarbonate is converted to insoluble carbonate ( $\text{CaCO}_3$ ).
- Precipitation of carbonate and subsequent deposition on the surface of heat exchangers, heating coils or pipes creates hard "limescale". This hard limescale is actually one of the modifications of calcium carbonate - calcite.
- ARAGO works on a natural electrochemical principle, during which zinc ions are released. The presence of zinc ions in the water will cause the carbonate not to crystallise as hard calcite but to crystallise as a non-stick and easily leachable aragonite.
- Although calcite and aragonite are two chemically identical substances (calcium carbonate), they have different structures and physical properties. And if a small amount of aragonite does settle on the surface (in appliances where there is no water flow, such as a kettle), it can be easily wiped off.
- ARAGO is active immediately after installation on the system.

## WITHOUT ARAGO TREATMENT DEVICE

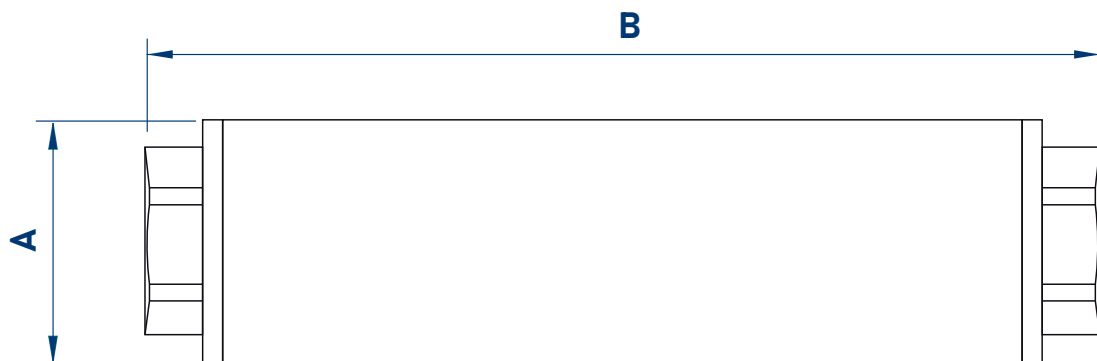


## WITH ARAGO TREATMENT DEVICE



# Technical parameters

Connection	Connection type	A (mm)	B (mm)	Flow rate (m <sup>3</sup> /h)	Pressure losses (kPa)	Max working pressure (bar)	Max working temperature (°C)
home ½"	internal thread	34	174	1,2	10	10	65
home ¾"	internal thread	43	216	2,5	12	10	65
home 1"	internal thread	48	216	4,1	13	10	65



## Recommended accessories



Product	Description	Connection	Max. flow rate (m <sup>3</sup> /hod)	Pressure losses (kPa)	Max working pressure (bar)	Height x width x depth (mm)
AFH-12	Mechanical dirt filter for Arago home 1/2"	1/2"M x 1/2"F	2,0	10	16	55 x 63 x 42
AFH-34	Mechanical dirt filter for Arago home 3/4"	3/4"M x 3/4"F	3,0	12	16	55 x 72 x 48
AFH-10	Mechanical dirt filter for Arago home 1"	1"M x 1"F	5,0	15	16	57 x 87 x 58

## Accessories

Product	Description	Connection	
	VS12-12	Brass nipple	1/2"M x 1/2"M
	VS34-34	Brass nipple	3/4"M x 3/4"M
	VS01-01	Brass nipple	1"M x 1"M
	VS12-15	Brass nipple	1/2"M x 15mm
	VS34-22	Brass nipple	3/4"M x 22mm
	VS01-28	Brass nipple	1"M x 28mm
	SP12-15	Straight coupling with external thread	1/2"BSP x 15mm
	SP34-22	Straight coupling with external thread	3/4"BSP x 22mm
	SP201-28	Straight coupling with external thread	1"BSPT x 28mm

## Installation diagram



## Installation detail

Install the device in water distribution systems with working pressure, flow and temperature not exceeding the technical characteristics of the product (see table of technical parameters). The ARAGO home treatment device is installed at the water inlet of the building in a vertical or horizontal position regardless of the direction of flow.

We recommend installing a mechanical dirt filter in front of the ARAGO home water treatment device to protect your equipment from the abrasive effects of solids, sand and sludge that are commonly found in the water supply. When used in public water supply systems, it is sufficient to place a seal with a filter screen at the inlet. Without the installation of a mechanical filter, the life and efficiency of the equipment may be reduced, clogged or even damaged.

We recommend installing a stopcock and by-pass for servicing purposes before and after the device. Use approved sealing products suitable for contact with drinking water.

## Lifetime



- The lifetime of the ARAGO mini treatment device is in the range of 6–8 years depending on the chemical composition and flow volume of the source water.
- The malfunctioning of the equipment will be manifested by the re-deposition of limescale.
- If the installation includes a mechanical dirt filter, we recommend regular maintenance of the filter screen to remove trapped dirt.

# arago™

Ionic water treatment device



**Protects**  
against limescale



**Extends the** service  
life of appliances



**Reduces**  
energy consumption



**Environmentally**  
**friendly**



**Easy** installation  
and maintenance

E [info@arago-wt.com](mailto:info@arago-wt.com)

More information at [www.arago-wt.com](http://www.arago-wt.com)